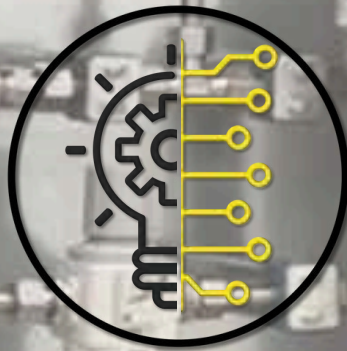




PROCESS INSTRUMENTATION



Precision Instruments for Every Process:
Optimize Performance, Maximize Control"



At Sulphurnet, we focus on delivering **tailored solutions** for sulphur melting and purification plants. Our process engineering and filtration skills enable us to provide a comprehensive design package, all in one place. We manage **every phase of your project**, from Basic Process Design to complete production units, including after-sales support.

Our instruments are optimally designed specifically for sulphur applications, ensuring **maximum efficiency and safety**.

If you need innovative solutions, our team is dedicated to exploring new possibilities, designing **custom-made solutions**, and achieving effective results. We aim to turn your challenges into successes.

Choose Sulphurnet for **expertise** and customized solutions that enhance efficiency and performance in your chemical processes.

Sulphurnet – Get it right the first time

Advanced Filtration Solutions

Turbidity Analyser **1**

Jacketed Radar Level Transmitter **2**

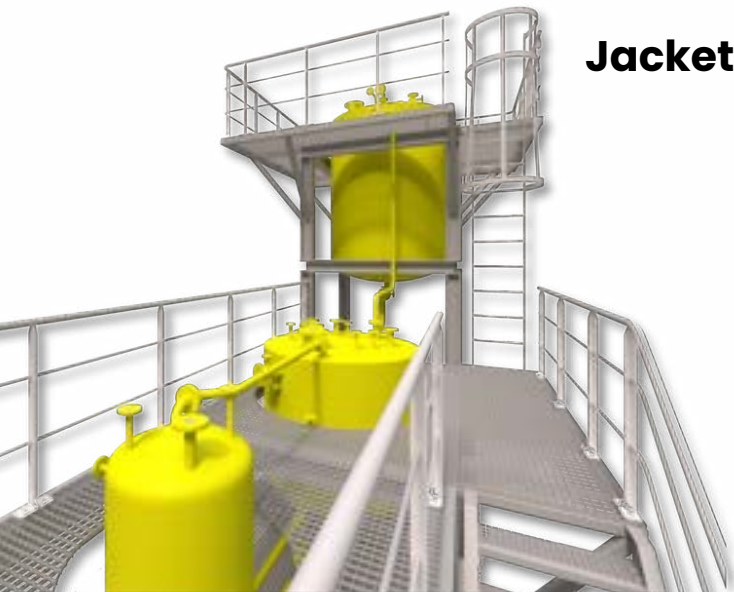
Bubble Tube Level Transmitter **3**

Pressure Indicator & Transmitter **4**

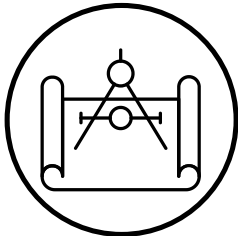
Temperature Transmitter **5**

Flowmeter **6**

Jacketed Valves for Liquid Sulphur **7**



Services



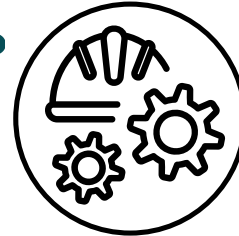
Engineering and Supply of Proprietary equipment

Basic Engineering
Detailed Engineering
Manufacturing and Procurement



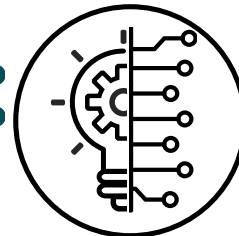
Construction Support & Commissioning

Construction Phase Support
SOP Development
Start-up Protocols & Execution
Plant Operation Manuals
Operator Training



Plant Audits

Inspections
Maintenance Recommendations
Plant Optimization



Sulphur Solutions

Sulphur Melting Tank
Liquid Sulphur Pressure Filter
Liquid Sulphur Polishing Filter
Self-Cleaning Liquid Sulphur Filter
Jacketed Valves
Instrumentation

We specialize in designing and producing advanced **liquid sulphur plants**, providing comprehensive sulphur melting and filtration solutions that meet the highest standards. Our plant designs cover every process part, from feeding solid sulphur to delivering clean sulphur to storage tanks.

We address the unique challenges of sulphur melting and purification, tackling corrosion, cold spots, dust collection, and firefighting. Our **optimized** sizing of **melters and filtration processes** enhances efficiency and prevents oversizing. We can handle process concepts up to 2500 MTPD within a single plant, expedite project completion and deliver a competitive edge.

Engineering Services

Sulphurnet's engineering team manages all aspects of industrial projects, offering guidance from project concept to helping clients adopt cutting-edge technologies and **optimizing CAPEX, OPEX, efficiency, and quality.**



Turbidity Analyser

Our advanced monitoring system continuously measures ash concentration in liquid sulphur post-filtration. Real-time detection allows for immediate corrective actions, effectively minimizing the entry of ash into the clean side of the process.



The Turbidity Analyser utilizes near-infrared (NIR) light ranging from 730 to 970 nm.

A precisely controlled, constant light beam penetrates the liquid sulphur, and scattered light from particles is detected by photodiodes indicating the ash content.

At the same time, a reference photodiode captures the unscattered light. If sulphur turbidity exceeds acceptable levels, the turbidity analyser detects this and sends a signal to the control system so necessary actions can be taken.

Features

- Real-Time in Line Ash Level Monitoring
- Low PPM Measurement
- No Calibration Required
- High-Quality Materials



Jacketed Radar Level Transmitter

Our unit ensures reliable and continuous level measurement of liquid sulphur, even with low reflective mediums.

Equipped with a heating system on the antenna, it prevents sulphur condensation, maintaining accuracy and efficiency.

- **Maintenance-Free Solution:** No crusting on the antenna ensures hassle-free operation.
- **Ease of Use:** Instruments are straightforward to set up and operate.
- **Versatility:** Suitable for both agitated sulphur melters and sulphur storage tanks.



WHAT
GETS **MEASURED**
GETS **MANAGED**



Bubble Tube Level Transmitter

The Bubble Tube Level Measurement System is a self-contained, low-cost instrument designed for precise level indication in liquid sulphur melting tanks. This system operates by measuring liquid level through density and pressure, making it ideal for challenging environments like a sulphur melting tank.



Advantages

Proven Reliability:

Bubble tube systems have been trusted for decades. ■

Advanced Technology:

Combines simplistic operation with the latest electronic instruments. ■

Preferred Method:

Optimal for level measurement in sulphur melting tanks. ■

Features

- **Contactless transmitter:** Ensures no direct contact with sulphur
- **Convenient installation:** Instrumentation can be placed in an easily accessible location.
- **No Side Connections:** Ideal for tanks without flange-mounted transmitter options.
- **Cost-effective and dependable:** This level measurement technology has been reliably used for many years.

Pressure Indicator & Transmitter



Our pressure indicators and transmitters are specifically designed to offer versatility in form and connections to suit diverse applications, including differential pressure measurements.

The manometer is connected to the flange using a flat diaphragm, which is filled with silicon oil. This setup allows the manometer to operate in high-temperature environments and prevents chemicals from entering the seal, which could otherwise damage the equipment.

Features

- **High-Temperature Design:** Reliable performance in extreme conditions.
- **Various Forms and Connections:** Customizable options to meet your specific requirements.

We **custom-design** our pressure gauges to ensure compatibility with a wide range of materials.



A grayscale photograph of an office workspace. In the foreground, a large computer monitor displays a complex technical drawing, likely an electrical schematic or floor plan, with various lines, symbols, and text. To the left of the monitor, a desk holds a small white hard hat on a stand. In the background, a bookshelf is filled with numerous binders and books. A teal-colored rectangular overlay is positioned in the center-left of the image, containing white and yellow text.

**Smart
investment.
Experienced
engineering.**

Temperature Transmitter

We offer a versatile range of temperature sensors designed to meet various application needs. With customizable lengths and diameters, our sensors can be tailored to your specific requirements.

Our temperature transmitters can provide local measurement and readout, as well as transmit a 4-20 mA signal to a DCS system.

Features

- Versatile and Reliable
- Fast Response Time
- Cost-Effective
- Durable Construction: All stainless steel execution
- Customizable Options
- Sanitary Process Connection
- Vibration resistant



Flowmeter

Our ultrasonic flow meter offers excellent accuracy, robustness, and advanced transmitter functionality, making it ideal for liquid sulphur applications.

The sensor design ensures a smooth flow path, free from any obstructions that could disrupt the liquid flow. ■

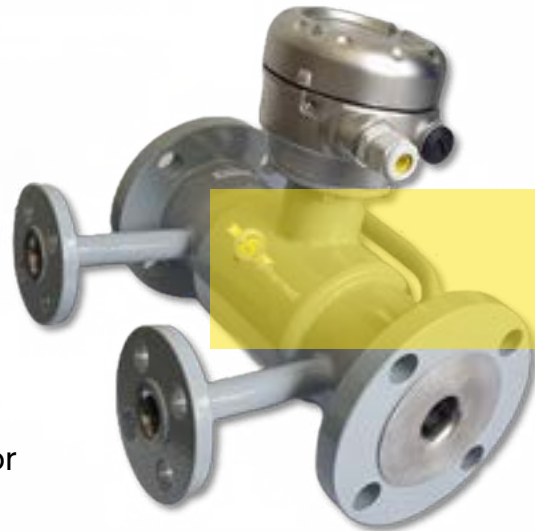
Fully jacketed, ideal for liquid sulphur processing. ■

Highly precise and reliable flow measurements. ■



- Continuous measurement
- Space-saving design for efficient installation.

- Ultrasonic flow measurement is unaffected by temperature, pressure, or viscosity.



A computer monitor is the central focus, displaying a dark image of a laboratory instrument. The monitor is on a black stand with a keyboard tray. The background shows a desk with a mouse and other equipment. The text is overlaid in white on the monitor's display.

**Elevate Your
Process:
Superior Filtration
for Liquid Sulphur**

Jacketed Valves for Liquid Sulphur

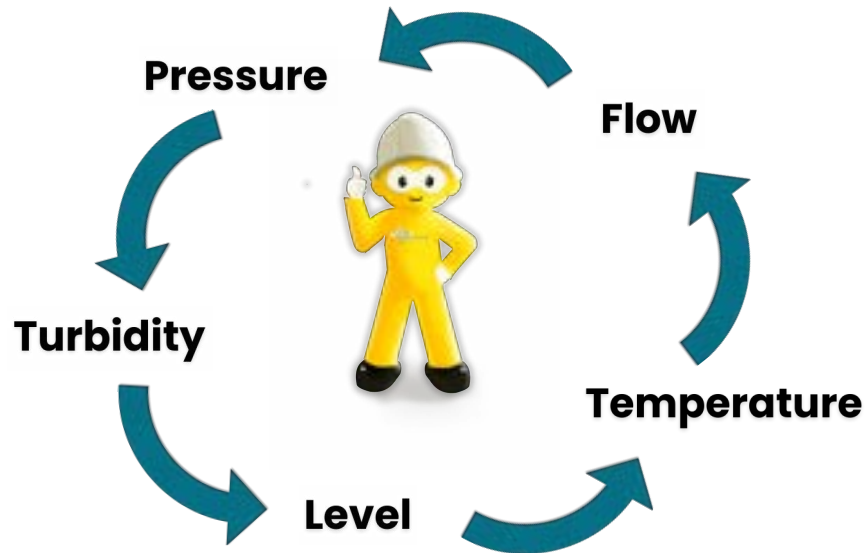
Sulphurnet offers a comprehensive range of valves with heating jackets, essential for maintaining a consistent process temperature to keep the media fluid. We offer both automated and manual operated valves to meet various operational needs.



Types:

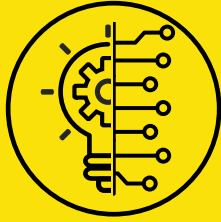
- Jacketed Ball Valves ■
- Wafer Type Jacketed Ball Valves ■
- Jacketed Plug Valves ■
- Jacketed 3-Way Valves ■
- Jacketed Gate Valves ■
- Jacketed Globe Valves ■
- Jacketed Check Valves ■

Process Hazard Analysis



**More than 150 clients in
more than 45 countries.**

IS IT
COMPLEX?
WE MAKE IT
SIMPLE.



INNOVATION

We embrace new technologies to revolutionize filtration plants, ensuring our clients benefit from the latest advancements.



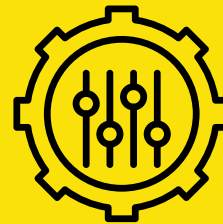
DEDICATION

We are committed to reducing production costs, improving quality, and enhancing safety and environmental performance for our clients worldwide.



EXPERIENCE

With over 50 years of combined experience in sulphur melting and filtration technology, we provide reliable solutions backed by a proven track record, ensuring excellence and trust in every project we undertake.



TAILOR MADE

We specialize in custom filtration systems tailored to each client's unique needs, ensuring optimal performance and seamless integration.

GET IN TOUCH TODAY

Sulphurnet offers an **all-in-one design package** that covers every stage of your project for sulphur processing plants, from the initial kick-off meeting to post-completion after-sales support.

We are dedicated to **more than just filtration systems**; our mission is to help customers worldwide **reduce** production costs, **enhance** product quality and yields, and **improve** Safety, Health, and Environmental performance.

Contact us:


 www.sulphurnet.com

 [Follow us on LinkedIn](#)

 info@sulphurnet.com

 +31 345 476 627

Pascalweg 5-14

 4104 BE Culemborg
The Netherlands



**More than 150 clients in
more than 45 countries.**

**GET IT RIGHT THE
FIRST TIME**

