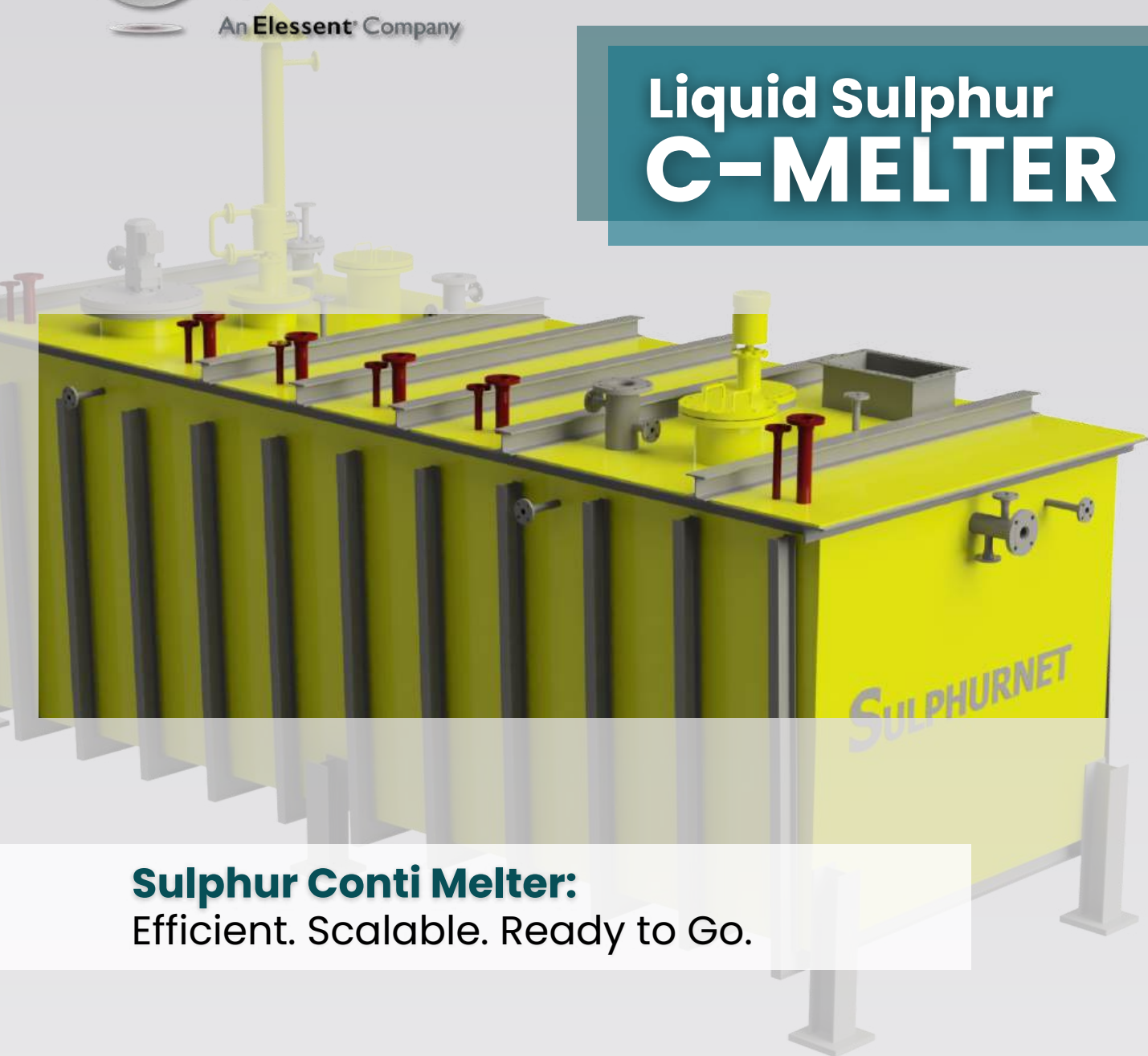




Liquid Sulphur C-MELTER



Sulphur Conti Melter:

Efficient. Scalable. Ready to Go.



At Sulphurnet, we focus on delivering **tailored solutions** for sulphur melting and purification plants. Our process engineering and filtration skills enable us to provide a comprehensive design package, all in one place. We manage **every phase of your project**, from Basic Process Design to complete production units, including after-sales support.

Our instruments are optimally designed specifically for sulphur applications, ensuring **maximum efficiency and safety**. If you need innovative solutions, our team is dedicated to exploring new possibilities, designing **custom-made solutions**, and achieving effective results. We aim to turn your challenges into successes.

Choose Sulphurnet for **expertise** and customized solutions that enhance efficiency and performance in your chemical processes.

Sulphurnet – Get it right the first time

Start Small. Scale Fast. Deliver Results.

The C-Melter **1**

Key Benefits **2**

Features **3**

Modular System Options **4**

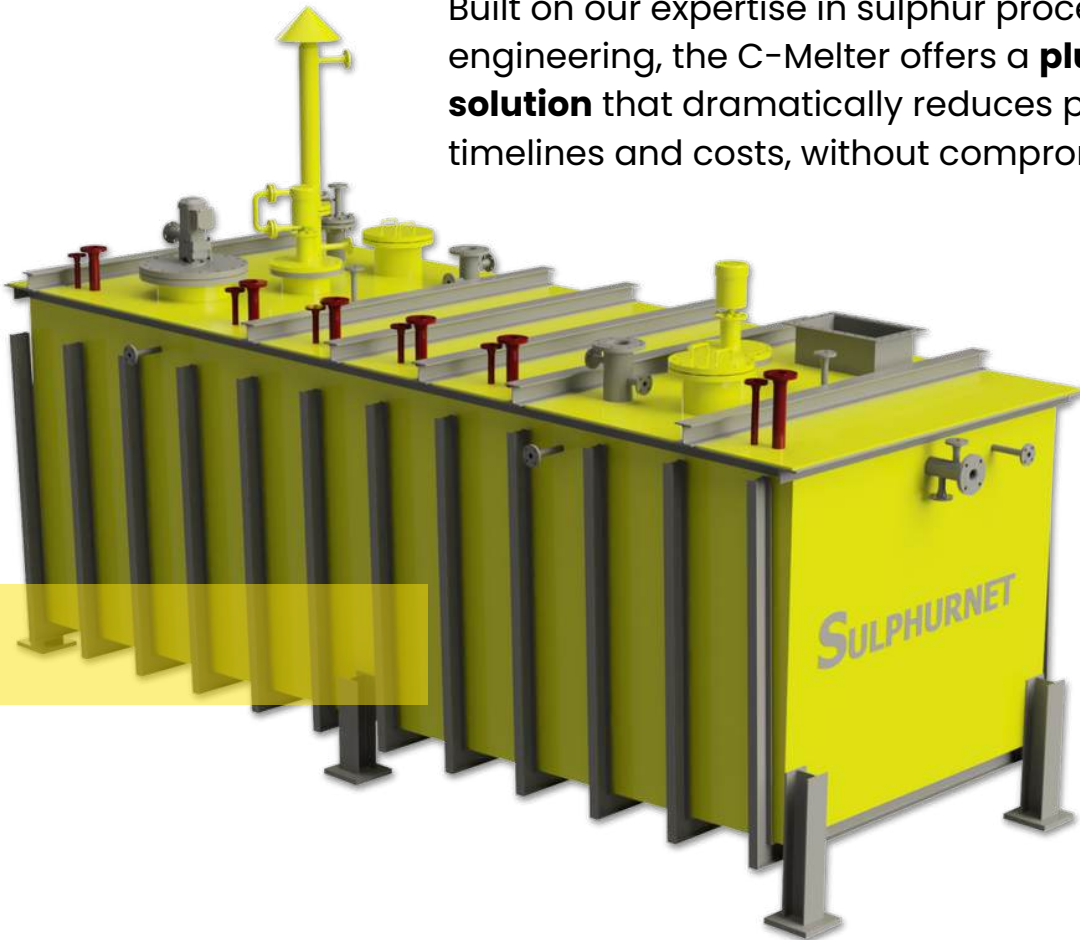
Technical Specifications **5**



C-Melter: The Smart, Modular Sulphur Melting Solution

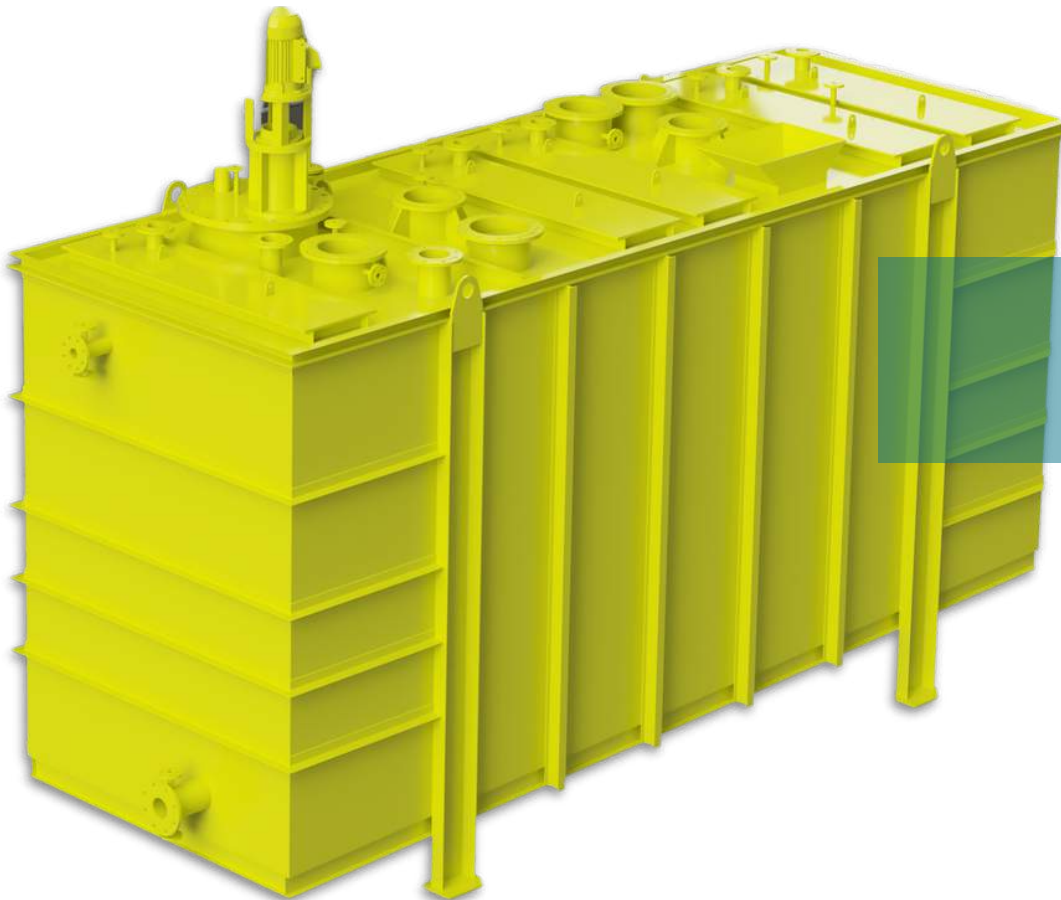
Traditional sulphur melting and purification plants demand high capital investment, complex engineering, and long lead times before delivering returns. That's why Sulphurnet developed the C-Melter: a **compact, container-sized** sulphur melting unit engineered for **fast** deployment, **modular** scalability, and operational **efficiency**.

Built on our expertise in sulphur process engineering, the C-Melter offers a **plug-and-play solution** that dramatically reduces project timelines and costs, without compromising quality.



Why chose the C-Melter

- **Low Initial CAPEX** within a fixed, predictable budget
- **Modular & Scalable:** add more units as your production needs grow
- **Lower Operating Costs (OPEX)** due to energy-efficient design
- **Portable & Adaptable:** easily relocated or integrated into existing system
- **Built to International Standards,** with regional compliance upon request
- **Shorter lead time to revenue** thanks to quick installation and commissioning



Features

High Purity Output

- Produces high-quality **bright yellow sulphur**
- **Ash** content below **10 ppm**—ideal for sulphuric acid production
- **Extends catalyst life** in downstream processes

Robust Engineering

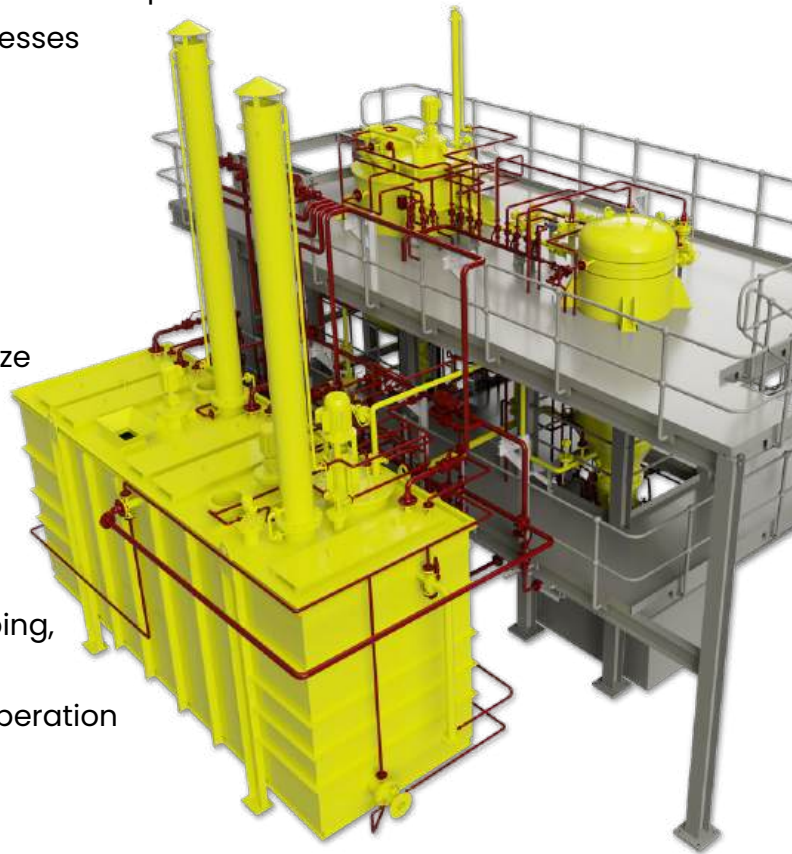
- Internal heat exchanger with **non-stop** replacement capability
- Vigorously agitated melting chamber for **optimal** melting **efficiency**
- **Corrosion-protected** structure to maximize durability

Smart & Self-Contained

- **Fully automated** with PLC and remote/local control panel
- Includes **all equipment** for melting, pumping, and optional filtration
- **Pre-assembled** for true plug-and-play operation

Flexible Operation

- **Easy** to transport and **install**
- **Independent** of building permits and construction delays
- **Seamless integration** with optional filtration, storage, and polishing units



Modular System Options

Filtration Module

- Retains particles as small as **1 μ**
- Output quality: **10 ppm solids** (standard sulphur input)
- Consists of: High-efficiency **filter**, **pre-coat** tank, and **pump**
- Delivers **optimal filtration** with minimal product loss and easy cleaning

C-Melter

Solid sulphur is introduced into an agitated melting chamber where it's liquefied via an **internal heat exchanger**. A submersible pump transfers the molten sulphur to the filtration system for purification.

Optional Add-Ons

- **Polishing filter**
- Particle **analyzers** for process monitoring
- Liquid sulphur **storage tanks** tailored to your needs



Technical Specifications

Dimensions (L x W x H)

5.8 m x 2.3 m x 2.3 m

Weight (empty)

24 tons

Weight (operational)

47 tons

Steam Consumption

130 kg/h/ton sulphur

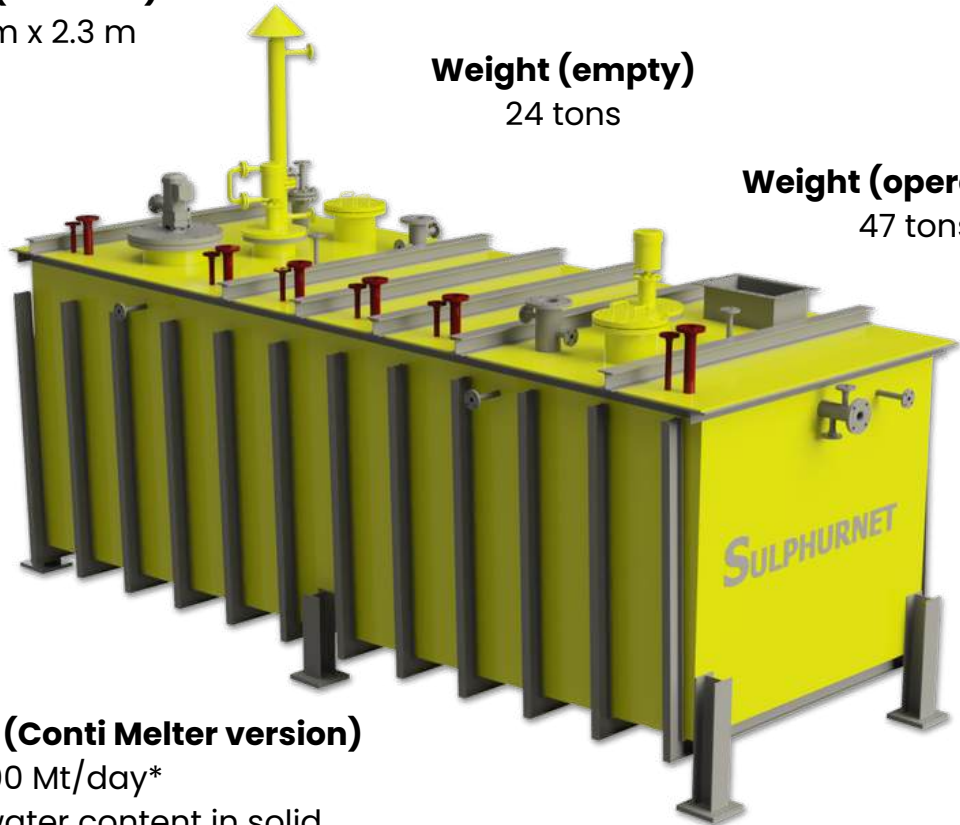
Power Consumption

~8 kW

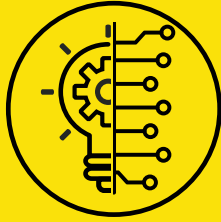
Melting Capacity (Conti Melter version)

20–100 Mt/day*

*Based on 2% water content in solid sulphur



With Sulphurnet's C-Melter and modular systems, you **no longer** need to **wait** years or overextend budgets to get your sulphur operation up and running. Our smart, flexible design puts **you in control**, today and tomorrow.



INNOVATION

We embrace new technologies to revolutionize filtration plants, ensuring our clients benefit from the latest advancements.



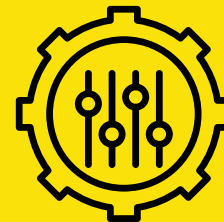
EXPERIENCE

With over 50 years of combined experience in sulphur melting and filtration technology, we provide reliable solutions backed by a proven track record, ensuring excellence and trust in every project we undertake.



DEDICATION

We are committed to reducing production costs, improving quality, and enhancing safety and environmental performance for our clients worldwide.



TAILOR MADE

We specialize in custom filtration systems tailored to each client's unique needs, ensuring optimal performance and seamless integration.

GET IN TOUCH TODAY

Sulphurnet offers an **all-in-one design package** that covers every stage of your project for sulphur processing plants, from the initial kick-off meeting to post-completion after-sales support.

We are dedicated to **more than just filtration systems**; our mission is to help customers worldwide **reduce** production costs, **enhance** product quality and yields, and **improve** Safety, Health, and Environmental performance.

Contact us:



www.sulphurnet.com



[Follow us on LinkedIn](#)



info@sulphurnet.com



+31 345 476 627

Pascalweg 5-14



4104 BE Culemborg

The Netherlands



**More than 150 clients in
more than 45 countries.**

**GET IT RIGHT THE
FIRST TIME**

