

# Liquid Sulphur **MELTING TANK**



**Sulphurnet Sulphur Melting Tank:**  
Reliable, Efficient, and Continuous  
Operation



At Sulphurnet, we focus on delivering **tailored solutions** for sulphur melting and purification plants. Our process engineering and filtration skills enable us to provide a comprehensive design package, all in one place. We manage **every phase of your project**, from Basic Process Design to complete production units, including after-sales support.

Our instruments are optimally designed specifically for sulphur applications, ensuring **maximum efficiency and safety**. If you need innovative solutions, our team is dedicated to exploring new possibilities, designing **custom-made solutions**, and achieving effective results. We aim to turn your challenges into successes.

Choose Sulphurnet for **expertise** and customized solutions that enhance efficiency and performance in your chemical processes.

**Sulphurnet – Get it right the first time**

# Pure Sulphur, Seamless Operations

**Key Benefits** **1**

**Why Choose the Sulphurnet Sulphur Melting Tank?** **2**

**Technical Features** **3**

**Critical Functions of the Sulphur Melting Tank** **4**

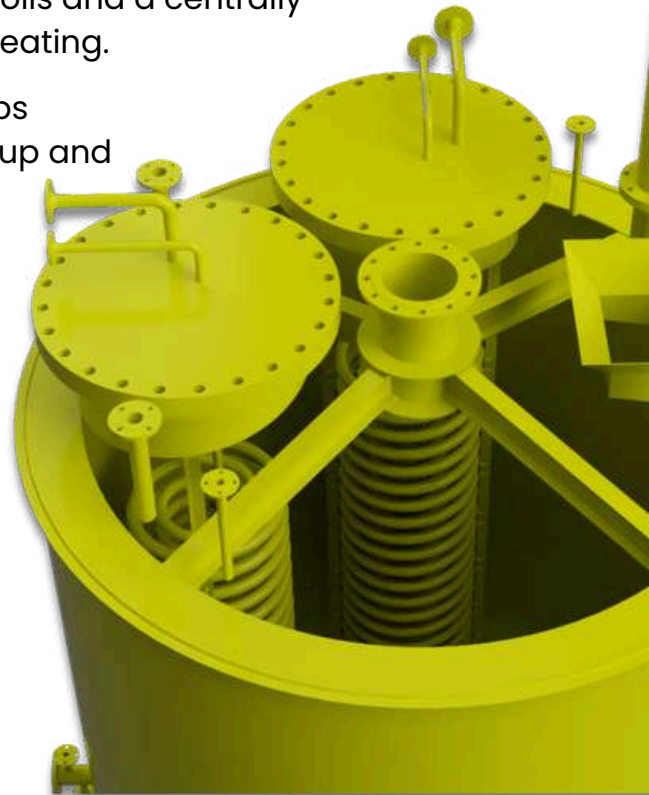


# The First Step to Reliable and Efficient Processing

The Sulphurnet Sulphur Melting Tank is the first critical step in the sulphur melting and purification process. Designed for optimal performance and reliability, our melting tank offers a continuous and efficient method to liquefy solid sulphur while ensuring acid neutralization, better heat transfer, and minimal maintenance.

## Key Benefits

- **Better Heat Transfer:** High-efficiency steam coils and a centrally mounted agitator ensure rapid and uniform heating.
- **Less Settling of Solids:** Powerful agitation keeps particles in suspension, reducing sludge buildup and manual cleaning needs.
- **Time and Cost Savings:** No need to stop operations for maintenance or cleaning, meaning higher productivity and lower operational costs.
- **Built for Durability:** Brick lining and robust materials ensure resistance against harsh processing conditions.

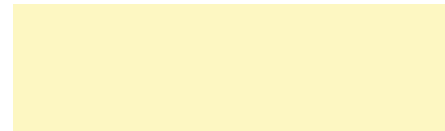


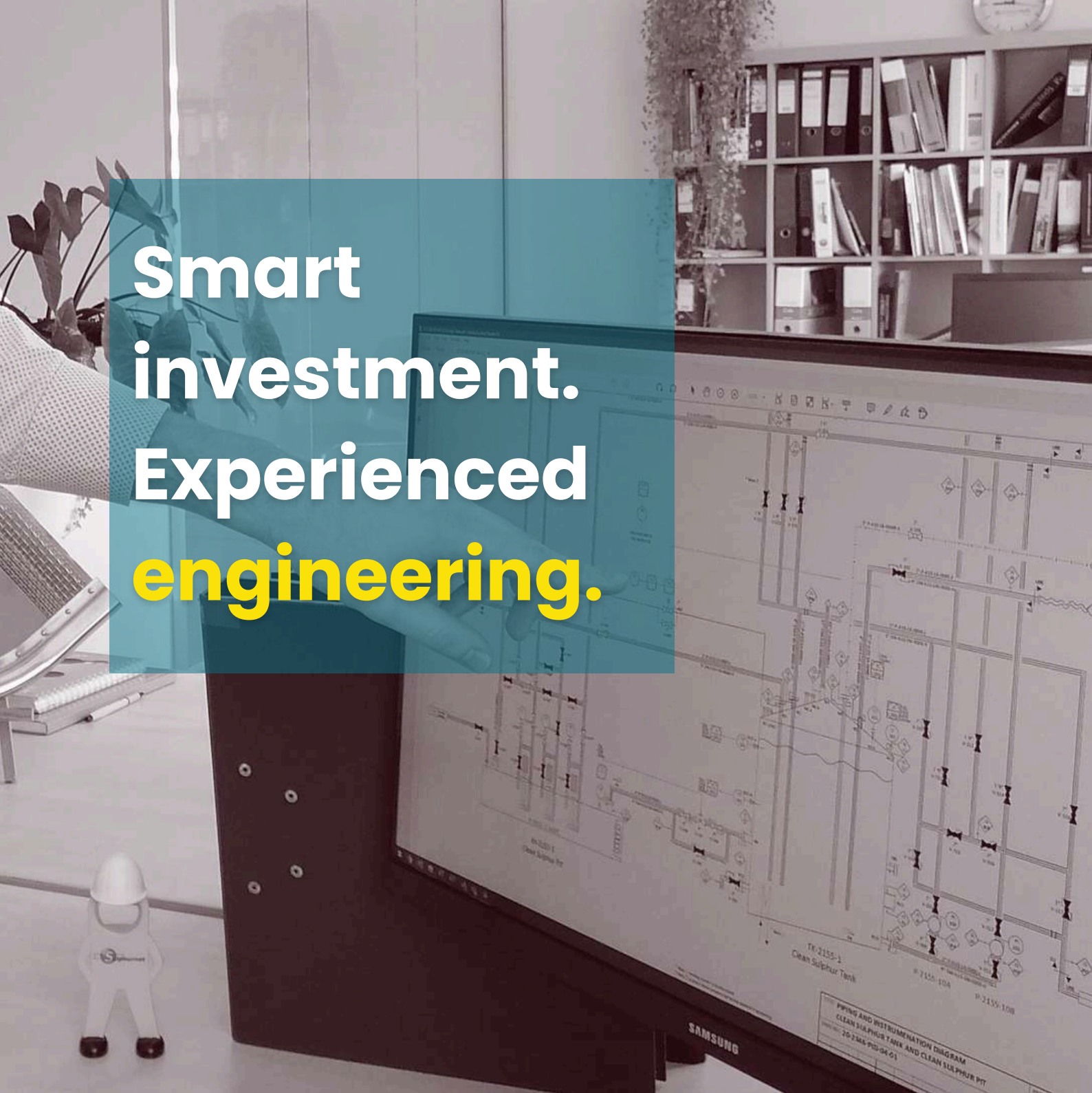


# Why Choose the Sulphurnet Sulphur Melting Tank?



- **Unmatched Efficiency:** Our tank can produce up to 70 metric tons of liquid sulphur per hour, making it one of the highest-capacity melters on the market.
- **Continuous Operation:** The conical bottom design allows for uninterrupted draining without halting the liquid sulphur metering operation.
- **Reduced Maintenance:** Internal brick lining and corrosion-resistant materials extend equipment lifespan and reduce downtime.
- **Improved Safety:** Acid neutralization with lime ensures a safer process by preventing corrosion and enhancing the longevity of downstream equipment.

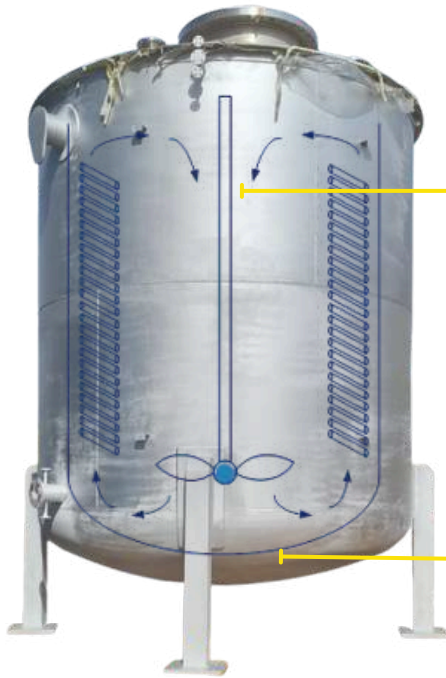




**Smart  
investment.  
Experienced  
engineering.**

The background image shows a hand pointing at a Samsung monitor displaying a detailed P&ID. The diagram includes labels such as 'TK-2155-1 Clean Sulphur Tank', 'P-2155-104', 'P-2155-108', and a title block that reads 'PIPING AND INSTRUMENTATION DIAGRAM CLEAN SULPHUR TANK AND CLEAN SULPHUR PIT' with a revision number '20-2155-PID-04-01'. The office environment includes a bookshelf with binders, a desk with a keyboard, and a small white figure of a person in a hard hat.

# Technical Features



1

## **Centrally Mounted Agitator:**

Enhances mixing and ensures a homogenous suspension.

2

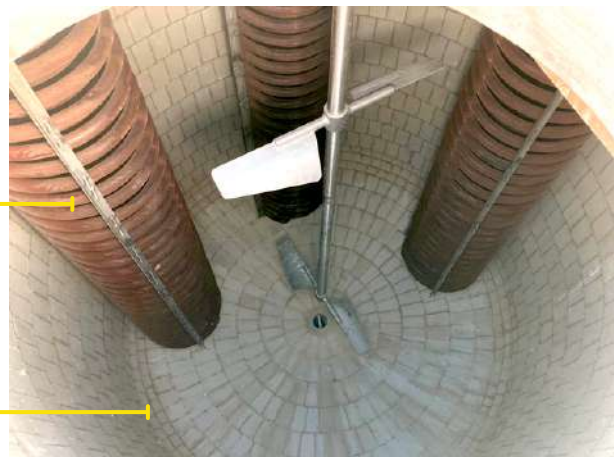
**Dish Bottom Design:** Allows for complete draining and reduces waste.

3

**Steam Coils:** Efficient heat exchange for quick and consistent melting.

4

**Internal Brick Lining:** Corrosion protection for longer equipment life.

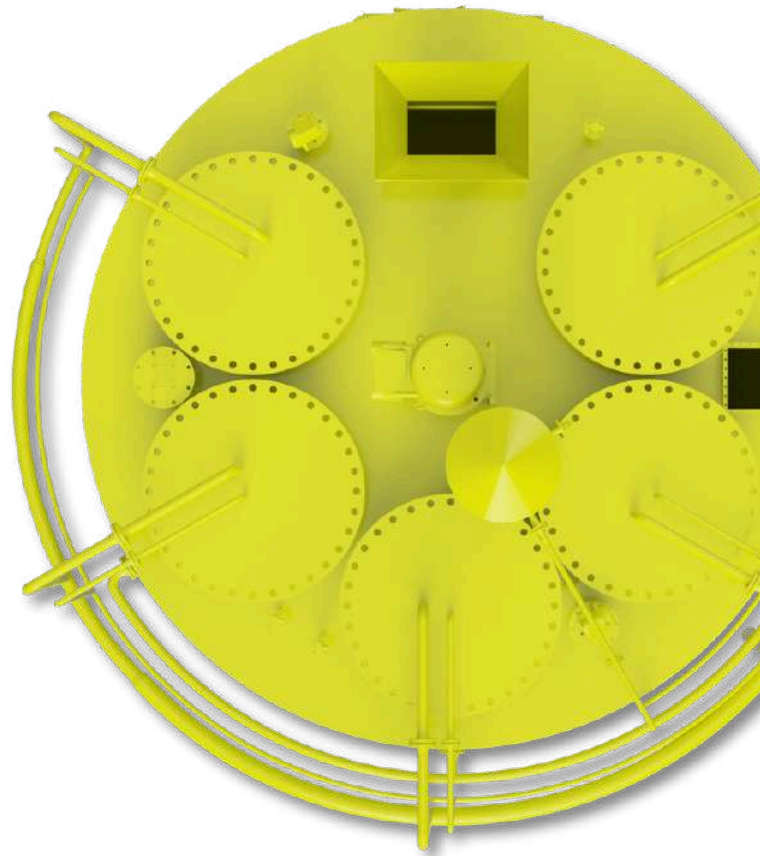




# Critical Functions of the Sulphur Melting Tank

The Sulphurnet Sulphur Melting Tank is responsible for more than just melting solid sulphur. It plays a vital role in:

- **Water Removal:** During the heating process, water evaporates, preventing excessive energy consumption and ensuring process efficiency.
- **Acid Neutralization:** Lime added to the solid sulphur reacts with sulphuric acid, forming gypsum and water, which enhances safety and prevents corrosion downstream.
- **Suspension of Solids:** The tank's strong agitator keeps particles suspended, avoiding solid deposits that could lead to blockages and reduced efficiency.





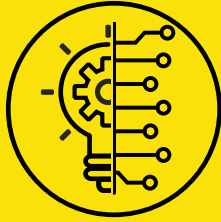
Failure to properly address these **design specifications** can result in costly **complications**, such as increased maintenance, unscheduled downtime, or even **damage** to equipment.

Investing in a high-quality, **well-designed melter** from Sulphurnet ensures your process remains efficient, safe, and cost-effective.



**More than 150 clients in  
more than 45 countries.**

A world map is shown in the background, with the landmasses colored in a light grey. Numerous countries are highlighted in a bright yellow color, indicating the global reach of the company's client base. The text is overlaid on the map, centered horizontally.



## **INNOVATION**

We embrace new technologies to revolutionize filtration plants, ensuring our clients benefit from the latest advancements.



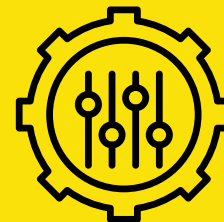
## **EXPERIENCE**

With over 50 years of combined experience in sulphur melting and filtration technology, we provide reliable solutions backed by a proven track record, ensuring excellence and trust in every project we undertake.



## **DEDICATION**

We are committed to reducing production costs, improving quality, and enhancing safety and environmental performance for our clients worldwide.



## **TAILOR MADE**

We specialize in custom filtration systems tailored to each client's unique needs, ensuring optimal performance and seamless integration.

# GET IN TOUCH TODAY

Sulphurnet offers an **all-in-one design package** that covers every stage of your project for sulphur processing plants, from the initial kick-off meeting to post-completion after-sales support.

We are dedicated to **more than just filtration systems**; our mission is to help customers worldwide **reduce** production costs, **enhance** product quality and yields, and **improve** Safety, Health, and Environmental performance.

## Contact us:



[www.sulphurnet.com](http://www.sulphurnet.com)



[Follow us on LinkedIn](#)



[info@sulphurnet.com](mailto:info@sulphurnet.com)



+31 345 476 627

Pascalweg 5-14



4104 BE Culemborg

The Netherlands



**More than 150 clients in  
more than 45 countries.**

**GET IT RIGHT THE  
FIRST TIME**

